



Kitsap Community Health Priorities

Progress Summit Summary Report

October 2, 2025

November 20, 2025



Summary Report Contents

Introduction.....	2-3
Activity #1 Summary.....	4
Community Partner Panel.....	5-6
Progress Share-out Highlights.....	6
Healthcare.....	7-11
Mental Health & Substance Use.....	12-13
Housing & Homelessness.....	14-15
Activity #2 Summary.....	16-17
Summit Wrap-up Highlights.....	18
Acknowledgements.....	19
Questions and Answers.....	20

Introduction

On October 2, 2025, Kitsap Public Health District hosted the 2025 Kitsap Community Health Priorities (KCHP) Progress Summit at the Norm Dicks Government Center in Bremerton, Washington. About 60 community partners attended, representing approximately 30 organizations.

The purpose of the KCHP Progress Summit was for community partners to come together to connect with each other and participate in the following objectives:

- Listen to a community partner panel speak on meeting basic needs in our community
- Hear about KCHP workgroup strategies and short term action steps
- Have opportunities to share how we can keep making progress
- Learn about social connection and resilience

The Summit aimed to cultivate a welcoming space for multisector partners to address the themes of progress, possibility, connection, and hope. It was especially important to uplift the great work that has been carried out in our community despite shifts and disruptions at the federal level.



Image 1. Opening remarks, October 2, 2025 KCHP Progress Summit, Norm Dicks Government Center (NDGC)

"The new dawn blooms as we free it. For there is always light. If only we're brave enough to see it. If only we're brave enough to be it."

– Amanda Gorman, The Hill We Climb

Progress Summit Agenda

The Summit opened with welcoming remarks from the Health District followed by a presentation describing what the KCHP is about.[1]

Two main events and a series of activities throughout the Summit inspired community partner input, insights, and a deepener understanding of the progress KCHP workgroups have accomplished over the past year.

To wrap up the the Summit, Kitsap Strong (which originated from a past KCHP cycle) presented on Hope & Resiliency, describing relational connection as a form of prevention and intervention.

[1] Kitsap Public Health District. Kitsap Community Health Priorities, <https://www.kitsappublichealth.org/kchp>





Celebrate and Capture Achievements of All

Activity #1 asked Summit Participants about a collaborative achievement that they or their organization was proud of being a part of.

In response to this question, 41 individual responses were received highlighting the following achievements:

- (Alliance for Equitable Healthcare) Gathering information on current healthcare needs in the county that could benefit from additional sustainable funding.
- (Asset Building Coalition of Kitsap) Implementation of the Community Reinvestment Project.
- (Bremerton Housing Authority) Housing families at Wheaton Landing in collaboration with Bremerton School District and several community partners.
- (Bremerton Nourishing Network) A dynamic group of leaders and community members who come together monthly to build relationships, discuss needs and make commitments to support each other!
- (Bremerton School District) Mental health, food security, housing, support for unaccompanied minors, attendance, graduation.
- (Childcare Action Council) Identify the childcare needs and gaps for the PSNS workforce.
- (Fishline) A mobile food market that can bring food to people. We have identified 6 partner locations and will add more in the coming months.
- (Helpline House) Continued collaborations with: Local farmers who donate to food bank, Island Volunteer Caregivers who assist aging/disabled folks in countless ways, Housing Orgs who build/manage reduce cost housing, Local schools/Park & Rec/pre-schools = facilitate scholarships for family enrichment/sports/cultural activities.
- (Holly Ridge Center) The creation of a classroom at Holly Ridge with Kitsap Community Resources, a truly accessible and inclusive learning space for children with disabilities.
- (Housing Kitsap) In collaboration with the Kingston Affordable Housing Working Group - 1) Time Square - Preservation of 16 units of affordable housing in Kingston for elderly and disabled households. 2) Collaboration with City of Poulsbo on Nordic Cottages - 8 units of newly constructed units for elderly and disabled households in Poulsbo.
- (Kaiser Permanente of Washington) Implemented a "passport" tool that summarizes patient next steps into a few bulleted reminders. This simple tool is improving the experience of care coordination dramatically.
- (Kitsap County Accessible Communities Advisory Committee) Working with the Park Department and others on walks for all.
- (Kitsap Immigrant Assistance Center) Start mobile clinics partnering with PCHS twice a month (medical/dental).
- (Kitsap County Division of Aging and Long-term Care) 173 check-in calls and 1,839 total intake (resource) calls made in the last year.
- (Kitsap Community Foundation) Kitsap Great Give! with 360+ nonprofits and sponsors, raised \$1.5m for local nonprofits in a single day.
- (Kitsap County Department of Human Services) 1) Working with community Boards on priority and funding recommendations. 2) Collaboration with service agencies on needs and priorities.
- (Kitsap Economic Development Alliance) Over the last year we have convened the business of childcare task force, bringing together key partners to address the critical shortage of childcare availability, as well as provide support around childcare workforce and entrepreneurship.
- (Kitsap Mental Health Services) Delivering mental health community education to improve public access and informational resources. Crisis collaboration with first responder services.
- (Kitsap Strong) Handle With Care, is a program dedicated to support continued success of youth experiencing trauma, by creating a more efficient way of communication between first responders on the scene of a trauma environment and the schools that can provide continuous support and understanding.
- (Kitsap Transit) Our Vanlink program partnered with WA Dept. of Veterans Affairs to provide a 6-passenger ADA van. They were under severe budget constraints and didn't have a way to obtain a van. Now they can get our veterans in wheelchairs where they need to go.
- (Olympic College) Rolling out 3 new programs specific to workforce shortages in partnership with VMFH, Kitsap County Commissioners, and OC. In partnership with Kitsap legal services, launched the medical/legal partnership in Kitsap County. Also expanded the Healthcare Career Camp, tripling the number of students who attended.
- (Peninsula Community Health Services) Creating permanent supportive housing (vouchered) for people with medical needs.
- (Rotary Club of Bainbridge Island) Rotary auction and rummage sale (July), + 1 million gross income. +2,000 volunteers.
- (Salish BHASO) Expansion of naloxone access in partnership with courts, tribal partners, treatment providers, agency partners, community service entities and outreach.
- (Suquamish Tribal Health Clinic) Working with OC to help students of multiple programs get training they need for program completion. We also donate to The Local Wild Life Center. We are working on a MAT program and are also working on collaborating with Kitsap OBGYN.
- (Virginia Mason Franciscan Health - St. Michael's Medical Center) 1) Collaborated with South Kitsap Helpline to launch medically tailored food boxes in Kitsap County. 2) Launched an advisory committee for the FMR in partnership with 15 CBO's.
- (YMCA of Pierce & Kitsap Counties) The YMCA has become a partner of Olympic Community of Health (OCH). OCH is 1 of the 9 accountable care hubs of WA State. In this partnership the YMCA is providing free care coordination services to any Kitsap resident (through Olympic Connect). These services focus on social drivers of health.



Panel



Community Partner Panel

The Community Partner Panel provided an opportunity to learn more about initiatives throughout Kitsap that seek to improve strategies to meet basic needs. The panel addressed aging and long-term care, food access, economic opportunity, transportation, and childcare. We learned how partners are addressing basic needs, each rooted in their missions, including:

Image 2. Community Partner Panelists:

- **Jason Doty**, Information & Assistance Supervisor of Kitsap County Division of Aging and Long-term Care
- **Cori Kauk**, Executive Director, Bremerton Foodline
- **Ginny Heller**, Chair of the Kitsap Asset Building Coalition, Kitsap Credit Union
- **Michelle Jayroe**, Customer Service Manager, Kitsap Transit
- **James Davis**, Business of Childcare Taskforce, Kitsap Economic Development Alliance

- Supporting people to be independent, and methods for checking in with older adults to mitigate social isolation
- Providing food security and fostering a nourishing network for cross-sector partnerships
- Coalition based efforts to focus on economic stability in Kitsap such as debt reduction and financial education
- Accessible and reliable transportation options
- And new efforts to reduce barriers for new childcare providers and centers

Continued...

Community Partner Panel

Ever present during the panel discussion was the theme of connection. With so many community partners facing funding cuts, the need for creative partnerships and collaborations are expected to grow. And ways our community can continue to support include:

- Telling someone about the services offered by the Kitsap County Division of Aging & Long-term care (360-337-5700)
- Explore what it looks like to develop your own nourishing network to address issues
- Given the opportunity to share what needs are coming up, wrap up meetings with commitments
- Keep our community involved and at the table for important discussions.
- Continue to share out community engagement opportunities and more



Progress Share out

Next, KCHP Priority Workgroups each presented to summarize the progress that has occurred in 2025.

KCHP Workgroup presentations were delivered by:

- Healthcare Systems Workgroup, Dr. Alecia Nye, Olympic College (member)
- Kitsap Community Perinatal Clinical Leadership Collaborative, Lynn Pittsinger, Kitsap Public Health (co-lead)
- Opioid Response Network, Naomi Levine and Gabe Hammond, Kitsap Public Health (facilitators)
- Kitsap County Affordable Housing Consortium, Joe Crain, St. Vincent de Paul (steering committee member)

Healthcare Healthcare Systems Workgroup



Goal: Healthcare workforce recruitment and retention

- 37 invited partners representing 23 organizations

Long-term Outcome: By the summer of 2028, Kitsap will have increased the number of healthcare professionals across types, raising staffing levels closer to state average.

Data: WA Office of Financial Management, local job data from partners, and other sources.

Current strategy implementation:

Collective Marketing
Tool

Early Career
Opportunities

Future strategy implementation:

Workforce
Housing

Policy Discussions



Short-term Progress: Collective Marketing

About: Design an online recruitment tool for healthcare professionals and those early in their career.

Over the past year we have:

- Identified a host for the website
- Gathered input from healthcare providers on the design for the website, and created a “mock page”

Next steps:

- Work on the content for the page
- Identify the various ways the page can be promoted

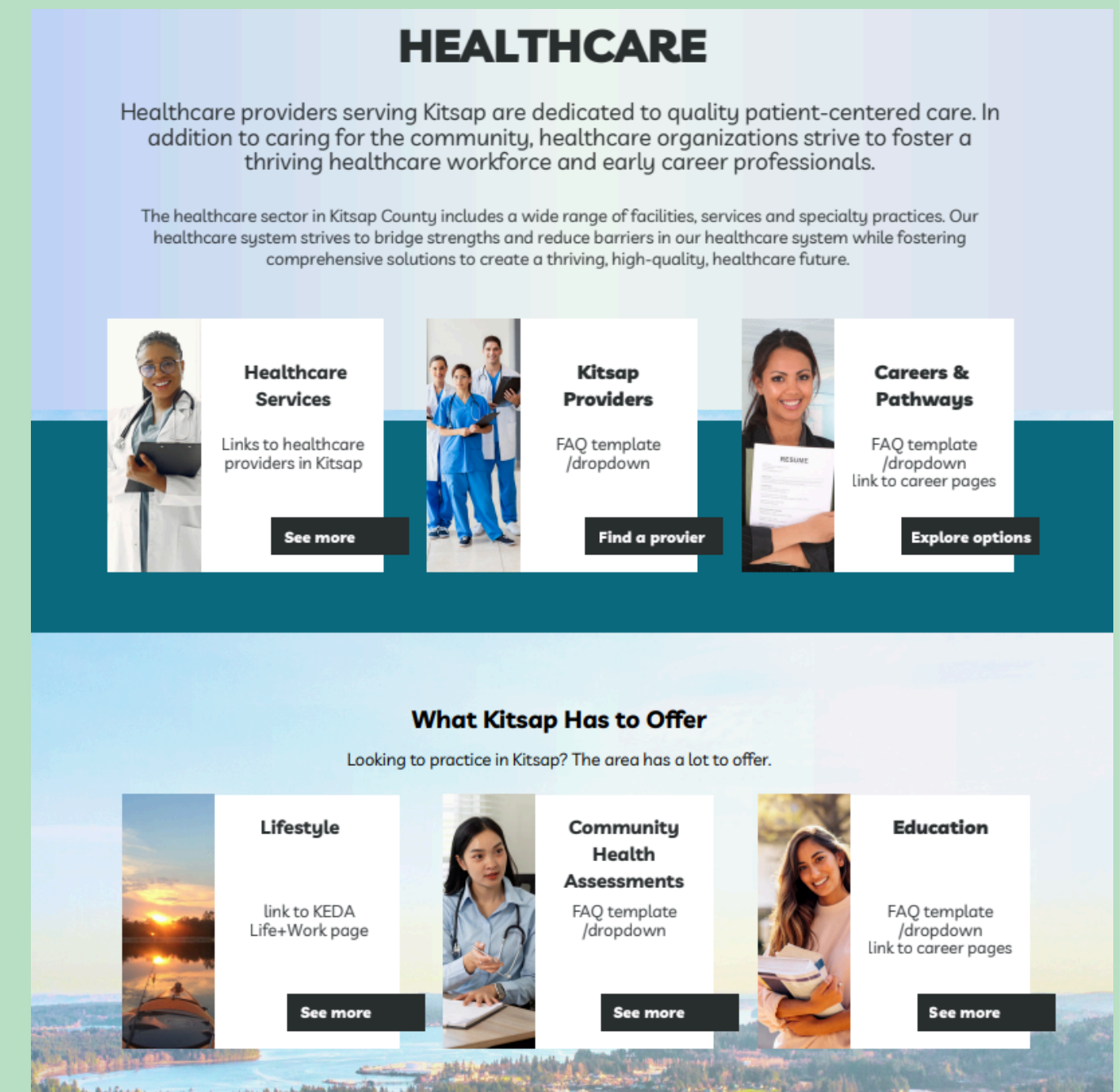


Image 3. Example of the new collective marketing webpage, draft by Kitsap Economic Development Alliance, Healthcare Systems Workgroup



Short-term Progress: Early Career Opportunities

About: Strengthen pathways for early career health professionals to join Kitsap's healthcare delivery network.

Over the past year we have:

- Evaluated how many opportunities exist in Kitsap County
- Started to assess cost of living and other socioeconomic factors that may serve as barriers to recruitment and retention

Next steps:

- Create a guide
- Increase workgroup involvement in healthcare "exposure" events for students (guest speaking, etc)

High Level Baseline Summary : Kitsap-based Healthcare Career Pathways

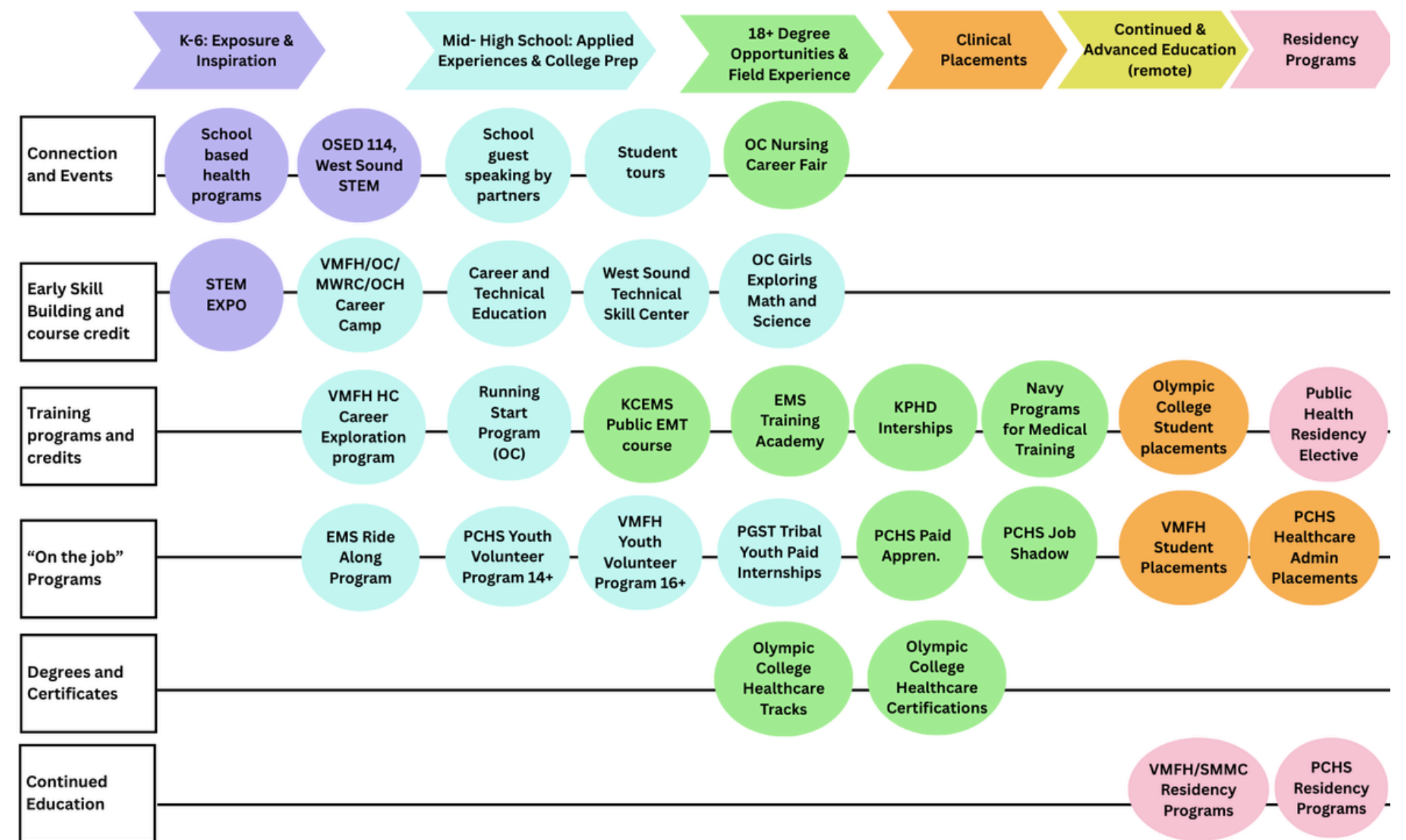


Image 4. Preliminary analysis of existing early career opportunities in Kitsap County



Healthcare

Kitsap Community Perinatal Clinical Leadership Collaborative



Goal: Healthcare access, specifically to comprehensive maternal and infant healthcare

- 41 invited partners representing 12 organizations

Long-term Outcome: Increase access to comprehensive maternal child healthcare inclusive of:

- prenatal care
- delivery care
- post-partum care
- mental health supports
- substance use treatment
- social services; and
- essential resources within the Kitsap and Tribal Nation communities.

Current strategy implementation:

Quarterly meetings for active problem solving and learning

Collectively identify current system strengths, weaknesses, and barriers

Connect partners/clinics with existing and emerging resources

Short-term Progress: Active Problem Solving

About: Strengthen linkages to safe care for all pregnant and parenting people by prioritizing issues affecting underserved populations.

Over the past year we have:

- Implemented solutions to address a collectively identified system issue
 - Example: Increasing access to car seats by coordinating with the Safe Coalition Partnership

Next steps:

- Increase participants' awareness of maternal and infant healthcare resources, including mental health
- Increase linkages between systems to improve referrals and access to care
- Support perinatal workforce initiatives



Image 5. Delivery of car-seats to the St. Michael Medical Center, Birth Center



Mental Health & Substance Use

Opioid Response: Partner Meetings & Network Map

Goal 5. Expand care options for mental health and substance use disorders.

- ~40 partners representing 25 organizations

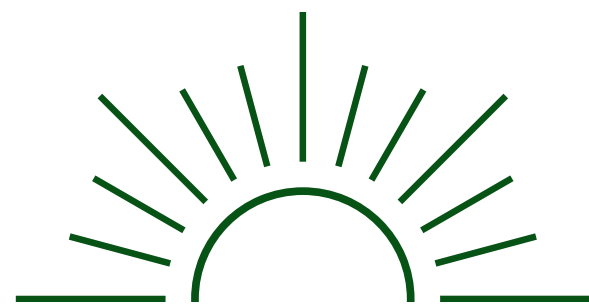
Long term: Over time, break down silos and strengthen relationships among partners focused on substance use supports including response, treatment, harm reduction, and prevention in Kitsap County.

Data: Community stories, Opioid Network Response Map, and opioid trends in Kitsap County.

Current implementation:

Opioid Partners Meeting

Develop and maintain a network map that highlights connections between organizations



Mental Health & Substance Use

Opioid Response: Partner Meetings & Network Map



Short-term Progress: Partner Meetings

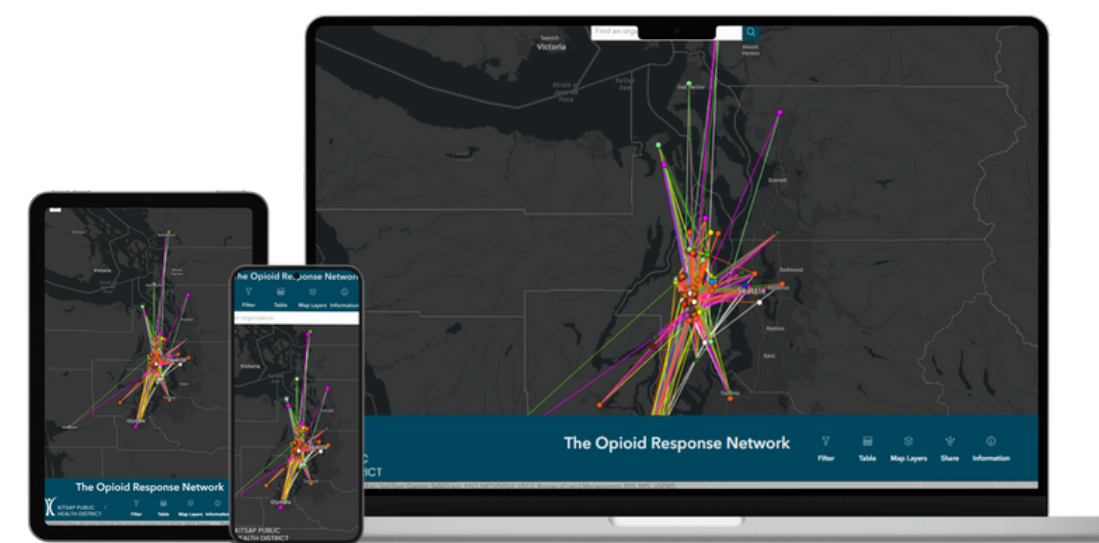
About: Convening partners to explore and understand ways to strengthen linkages to care through relationship building and resource mapping activities.

Over the past year we have:

- Facilitated 6 opioid response meetings with community partners
 - Activities include team building and professional networking
- Developed a network map to analyze partner connections related to opioid response and where gaps may exist

Next steps:

- Continue to evolve the map overtime and understand how the meetings result in increased access to services and partner connections



Opioid Response Network Map
<https://kitsappublichealth.org/ORNmap>



Housing & Homelessness

Kitsap County Affordable Housing Consortium



Goal: Ensure affordable and safe housing

- 5 Steering Committee Members
- Prospective Consortium membership call coming up in December 2025

Long-term Outcome: By 2028, the Kitsap County Affordable Housing Consortium has expanded a portfolio of affordable housing projects, increasing housing options for our community along the housing continuum.

Data: WA Department of Commerce Housing Needs Assessment, use of housing vouchers in Kitsap, monthly housing costs 30% or more of household income, and more.

Current strategy implementation:

Evolve the former Kitsap County Affordable Housing Taskforce into a Consortium



Housing & Homelessness

Kitsap County Affordable Housing Consortium



Short-term Progress: Develop a Housing Consortium

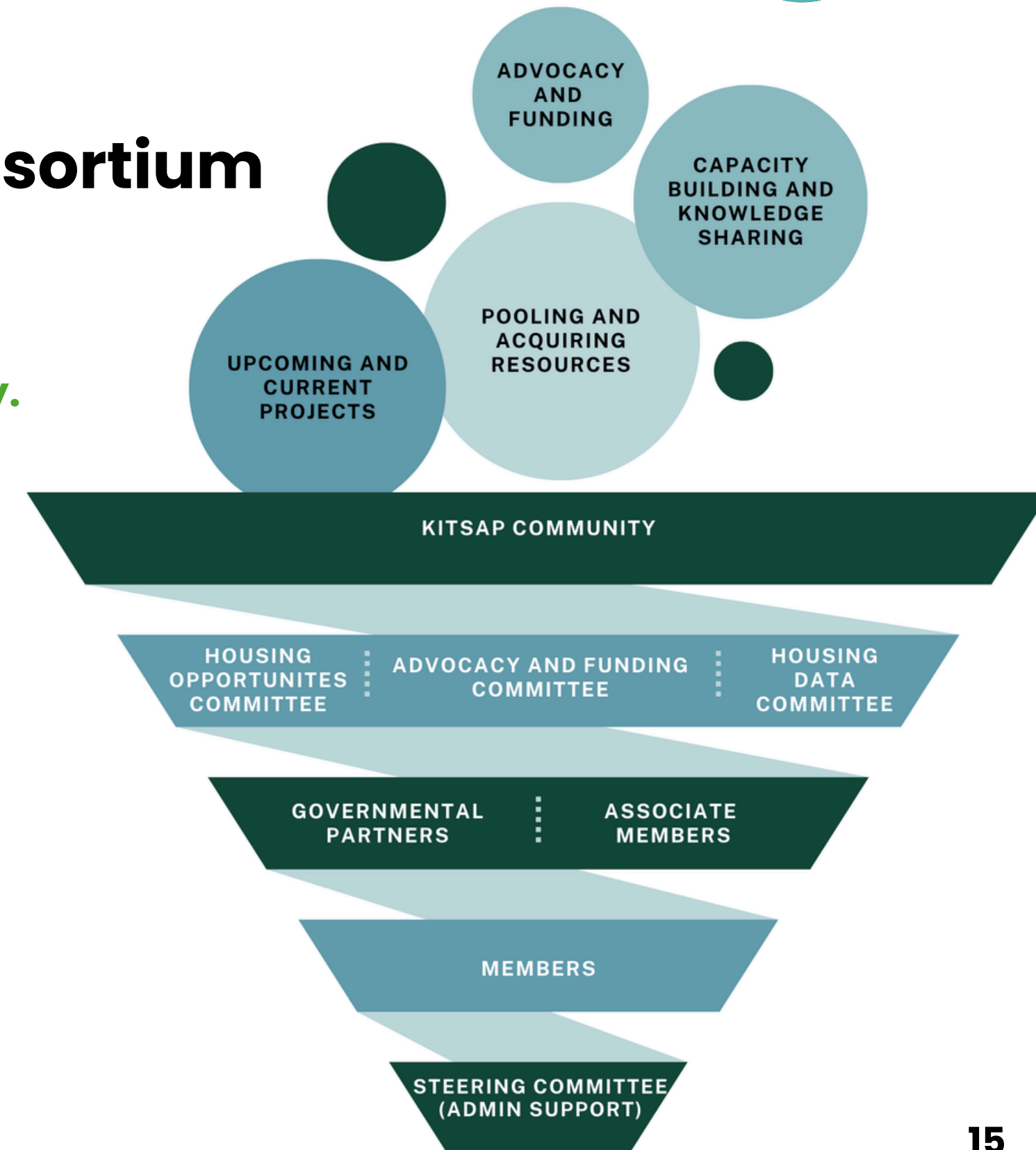
About: Establish a Kitsap County Affordable Housing Consortium for local housing partners to increase the number of collaborative affordable housing projects and funding opportunities in Kitsap County.

Over the past year we have:

- Developed a charter that describes the vision and objectives of the Consortium

Next steps:

- Plan and host a “launch” call for partners and housing leadership interested in joining the Kitsap County Affordable Housing Consortium





Progress Share out

The goal of Activity #2 was to understand the extent to which the KCHP community believes that progress has been made towards each priority goal. The feedback from the KCHP community will be used to inform next steps in implementation and evaluation within each priority area workgroup.

After a representative from each priority area workgroup presented on progress completed over the past year, KCHP meeting participants were asked to answer the following question on a printed worksheet:

Question: After hearing the presentations today, do you believe that the workgroups are headed in the right direction towards each priority goal?

For each KCHP Priority Area, please select one checkbox and let us know your thoughts in a few sentences.


Yes. Keep up the good work


Too early to tell or I need to learn more


Needs improvement

☐

.....

☐

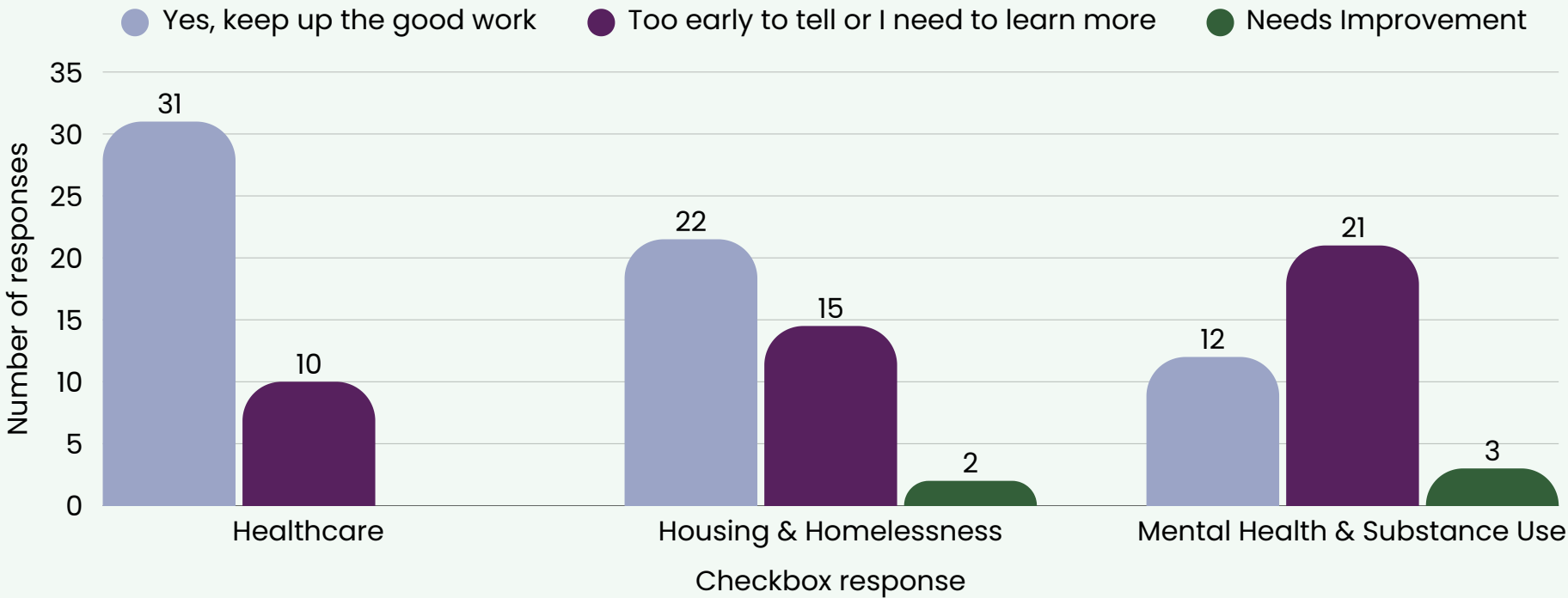
.....

☐

Please use this box to elaborate and/or offer suggestions:

Activity #2 Findings

KCHP Community responses to the question, “after hearing the presentations today, do you believe that the workgroups are headed in the right direction towards each priority goal?”, Oct 2, 2025





Feedback on Progress by Priority Area

Summarized themes from the written feedback are presented in Table 1 within each priority area. Common themes that appeared across at least two priority areas included 1) evidence of strong collaboration between workgroup participants, 2) suggestions to partner with community-based organizations (CBOs) to address basic needs and increase access to providers, and 3) suggestions to to educate the community about solutions and to address stigma.

Table 1. Summarized themes from KCHP Community feedback on the progress reported by Priority Area workgroups, Oct 2, 2025

Healthcare	Housing & Homelessness	Mental Health & Substance Use
<ul style="list-style-type: none">• Strength: Evidence of strong collaboration• Strength: Responding appropriately to healthcare workforce needs• Suggestion: Strengthen connections with CBOs to increase the diversity of the workforce and access to providers• Suggestion: Define metrics for progress and include success stories, equity• Suggestion: Consider strategies to recruit perinatal care providers• Suggestion: Define mid- and long-term outcomes for perinatal collaborative	<ul style="list-style-type: none">• Strength: Evidence of strong collaboration• Suggestion: Consider community education and advocacy to reduce stigma and increase support for needed housing• Suggestion: Explore innovative opportunities and strategic partnerships to diversify housing options• Suggestion: Specify metrics that describe the impact of housing project collaborations	<ul style="list-style-type: none">• Strength: Excitement and support for opioid response network• Suggestion: Strengthen connections with CBOs to increase the diversity of the workforce and access to providers• Suggestion: Consider community and provider education to reduce stigma• Suggestion: Consider expanding the scope of the strategies• Suggestion: Clarify goals of the opioid response network map to emphasize impact



Wrap Up: Kitsap Strong Closing Presentation

To bring the Summit to a close, Kitsap Strong, a former KCHP strategy, presented on the themes of hope and resiliency. The presentation demonstrated the ways that relational connection is a vital tool for prevention and intervention. The presentation ended on the following prompted question:

When we come back next year, what will it look like for us to have moved forward in the spirit of connection and relationship?

- Excited to see each other and hear about our collective work. Tables of project partners, fewer introductions. Unless – there's such a draw to collaborate we outgrow the room! More diverse engagement.
- I would like to see significant progress in the three priority areas in terms of increases in affordable housing solutions, reduction in opioid deaths, increased connections to agencies that are not "siloing" resources and greater pathways to healthcare opportunities for young parents, children, seniors and budding providers. More than the results, we need Olympia to prioritize providing stable funding and policies to help uplift our great state and its people.
- Care, connection, community, call to action, completion.
- Being able to showcase more partnership and innovative collaborations.
- Moving forward with housing plans. Blue prints.
- Organizations from opposite ends of the support spectrum(s), maybe who never knew there was a need to fulfill that would bring them together, will be building/implementing a program that raises hope and fosters success in the collective community.
- We can recognize and/or name more folks in the room.
- More Kitsap presence in Peninsulas Early Childhood Coalition, nourishing networks, consortiums, etc. Solid social isolation plan for Kitsap. Follow-up data on childcare, healthcare workers, prenatal care, all the "deserts" in Kitsap so we can formulate next steps. More collective impact conversations with Kitsap Strong facilitation.
- Housing, education, nutrition, public safety, would all be working together to reduce the impact of poverty throughout Kitsap County.
- Continued alignment in supporting our community with more housing, healthcare and behavioral support.
- Accountability in our actions with one another. Collaborate with good intentions and being wholly transparent. Growth (examples of failed ventures and how you had to pivot)
- Have a greater understanding of how all our programs intersect and leverage existing relationships to expand community partnerships.
- Tangible connections that would have resulted in actionable directions. Ideas + strategy + connection = change
- More housing in progress
- Less homelessness and more community. Less food insecurity and more healthy options. Open communication and more collaboration. Partnerships.
- Re: 3 categories/priorities. I/we will continue to learn about the priority we engage in less. Meaning continued learning over the year.
- Continued connection, continued hope, continued hard work.
- I hope we won't have to wait one year to come back together. Collaboration takes time!
- Moving forward by more partnerships, funding, and collaborations to continue the forward momentum.
- More community collaboration forming a stronger foundation.
- Helping a community partner achieve their goals by leveraging our own resources.
- A coordinated synchronized week long event across community partners.
- Many of the people in the room will connect with others on a new effort.
- Cohesive, coordinated
- I will personally be more connected with more people in the room
- Stronger relationships
- Relationships – measured change
- Cohesion
- Need update on behavioral health access
- Innovative community problem solving. Strategic transportation.
- A collaborative presentation between teams with perceived different goals.
- We've advanced innovation solutions by creating uncommon and strengthening partnerships. We've connected the dots between the priorities and basic needs.
- All providers/partners have a more comprehensive understanding of how our individual missions intersect
- Silos-food-transportation-schools-hospitals-clinics-healthcare-housing



Image 6 Activity Break, October 2, 2025 KCHP Progress Summit, Norn Dicks Government Center (NDGC)

Thank you to all Summit Participants!

Alliance for Equitable Healthcare
Asset Building Coalition of Kitsap
Bremerton Foodline
Bremerton Housing Authority
Bremerton School District
Child Care Action Council
Fishline
Helpline House
Holly Ridge Center
Housing Kitsap
Jefferson County Public Health
Kaiser Permanente of Washington
Kitsap Accessible Communities Advisory Council
Kitsap Black Student Union

Kitsap Community Foundation
Kitsap Community Resources
Kitsap County Division of Aging and Long Term Care
Kitsap County Salish Behavioral Health Administrative Services Organization
Kitsap County Board of Commissioners
Kitsap County Department of Human Services
Kitsap Economic Development Alliance
Kitsap Homes of Compassion
Kitsap Mental Health Services
Kitsap Immigrant Assistance Center
Kitsap Public Health District
Kitsap Regional Library

Kitsap Strong
Kitsap Transit
Mount Zion Missionary Baptist Church & Partnering for Youth Achievement
Olympic College
Peninsula Community Health Services
Rotary Club of Bainbridge Island
St. Vincent De Paul
Suquamish Tribal Health Clinic
Virginia Mason Franciscan Health
YMCA

Questions and Answers:

- Question: Have you considered marketing to the military spouse/veteran community for healthcare jobs?
 - **Answer- Provided by Kitsap Public Health, KCHP Healthcare Systems Workgroup**
 - Overall, the Healthcare Systems Workgroup has discussed recruitment and retention, and who, broadly. For example, veterans such as individuals who have served as U.S. Navy Corpsmen have been discussed and Olympic College offers a CS: Corpsman/medic to practice nurse program to support career growth. The collective marketing webpage aims to highlight community factors that are important to support spouse/families such as what it is like to live in Kitsap, schools, job opportunities, and more.
- Question: Caregivers are essential to their own families as well as the families they provide services for. Switching from family care to patient care, leaves little room for self care (mentally & physically). What is being done to address this and help foster emotional awareness/support for caregivers to that they can be equally available for themselves and their families, and patients?
 - **Answer - Provided by Kitsap County Aging and Long Term Care**
 - Kitsap Aging and Long-Term Care offers a few different programs and suggestions to support caregivers. Our Intake team can walk people through the variety of programs and complex scenarios by calling the main office line 360-337-5700.
 - Family Caregiver Support Program (FCSP) is unique to others as it treats unpaid caregivers as the identified client. Services and supports through FCSP are intended to benefit caregivers. Respite (personal care hours) for care receiver is sometimes part of this as it allows time for caregivers to spend on their own self-care.
 - Other programs (Medicaid COPES, Tailored Supports for Older Adults) will sometimes pay family (non-spouse) to be paid caregivers, which can alleviate some stress of having to maintain full-time employment while also providing caregiving. We also have information on support groups that can be beneficial.
 - We also offer educational workshops throughout the year, as well as a monthly e-newsletter at no cost to our community.
 - We offer a Caregiver Resource Library at our main office in Port Orchard.
- Question: Many elderly persons serve as the flagship and/or caregivers of their families. What do you notice are the biggest struggles for these families when that flagship figure transitions to care?
 - **Answer - Provided by Kitsap County Aging and Long Term Care**
 - Time management (lack of enough hours in the day) certainly comes up frequently. When those same caregivers transition to needing care themselves, it can be mentally exhausting as their loved ones they are caring for still try to depend on them for support. We often run into situations where married couples each participate in certain services as care receivers (COPES and TSOA).
 - We are also noticing more male caregivers over the years. Currently, in Kitsap we notice it is about equal male to female caregivers.
 - We are also serving older caregivers (to spouses or younger adult children) as people live longer.
 - Caregivers are often unaware of the caregiving journey. The Dementia Roadmap is a helpful resource to assist with planning for future care needs.
 - Often, there is a need for a back-up plan should the caregiver require care themselves. If the Caregiver is a spouse, figuring out a "Plan B" is helpful even if the caregiver will be away for just a short amount of time. Typically, another family member, friend, or neighbor can help look after the Care Receiver. If there is no one else in the picture that can step in to assist, and depending on the level of care needs that the Care Receiver has, having a conversation with the Aging Disability Resource Network (ADRN) / Information and Assistance (I&A) staff will help pinpointing concerns, troubleshoot issues and make resource recommendations. For clients that are case managed through our local programs, we help navigate through potential solutions and make recommendations that will suit both Caregiver and Care Receiver.
- Question: Could Kitsap Public Library partner with food on the Go to Deliver books to seniors too?
 - **Answer - Recommendation to connect with local food banks such as Fishline (mobile food market) and Bremerton Foodline to learn more.**
- Question: Is there a collective list of resources available in Kitsap County?
 - **Answer - Recommendation to reach out to the Housing and Homelessness Coalition**
 - Updated in 2025, the Coalition provides a Community Resource Guide available for download by accessing: <https://kitsaphhc.org/>