

Kitsap Health Equity Collaborative

May 20, 2025



Erica Whares
Equity Program Coordinator

Maria Fergus
Community Engagement Specialist



Welcome

1. Welcome, recognition, and reminders
2. Workgroup share-outs
3. Legislative Wrap-up
4. Introduction to Jeneise Briggs, Diversity and Community Engagement Manager for the City of Bremerton
5. Holding space together to have conversations amid uncertainty
6. Share what's being done locally as a response

Health Equity Collaborative

An aerial photograph of a coastal town, likely in Kitsap County, Washington. The town is built on a peninsula or near a large body of water. In the foreground, there is a large marina filled with many white sailboats and yachts. The town itself is densely packed with various buildings, including residential houses and larger commercial or institutional structures. In the background, a range of mountains with snow-capped peaks is visible under a blue sky with scattered white clouds. The water in the foreground is dark blue, and a small white sailboat is visible in the lower right.

OUR VISION

Everyone in Kitsap County can achieve their optimal health and safety, and no one is disadvantaged in achieving these outcomes because of systemic inequities or systems of oppression, including racism.

OUR MISSION

The Kitsap Health Equity Collaborative convenes to identify and implement shared solutions and collective actions, promote pro-equity policies, and amplify the voices of communities most affected by systemic inequities, including racism.

Collaborative Agreements

Respect:

We will use respectful and inclusive language to honor different lived experiences and perspectives, recognize individual biases and systems/structures of oppression, assume good intent, and distinguish that intent doesn't negate impact, and keep sensitive information shared at meetings confidential.

Inclusion and Open-mindedness:

We will honor the contributions of all members and seek and value every person's input by ensuring everyone has a chance to comment and by being open to different and opposing perspectives and opinions.

Consensus:

We understand consensus is desired as the decision-making process and that differing opinions are part of the process, and while majority vote will determine next steps, the opinions of those in the minority will be honored by members with respect, inclusion, and open-mindedness.

Congratulations and Recognition

Akuyea Karen Vargas received the Island Treasure Award for the significant impact her work has made in the arts and humanities on Bainbridge Island

Gabriela Ituarte received the DCYF Unsung Hero Award and the P.E.A.R Star award for Child Development from the WA Office of Equity

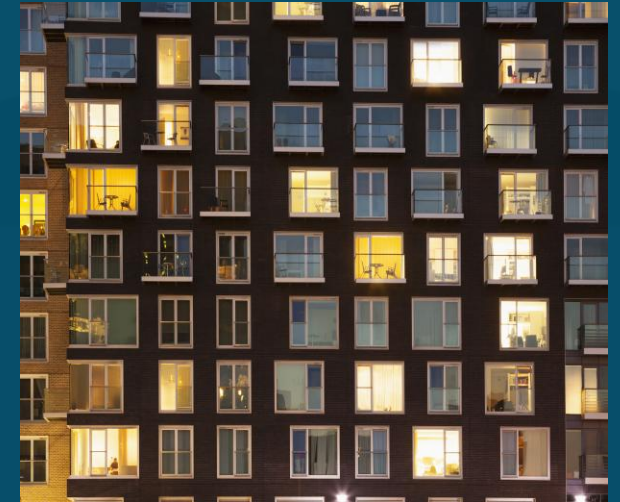
Workgroup share-out



**Accessible Medical
Care**



**Accessible Mental
Health Services**



**Affordable
Housing**

2025 Legislative Session Outcomes:

Highlights for the Health Equity Collaborative



Adrienne Hampton

Policy, Planning, and Innovation Analyst
adrienne.hampton@kitsappublichealth.org

Healthcare & Mental Health

Included in the Budget:

- Apple Health Expansion for low-income immigrants (\$150M)
- Suquamish Health Center (\$18.4M)
- School-based health centers
- Peninsula Community Health Services
- Western Washington University, Olympic College Poulsbo campus expansion (\$45M)
- West Sound Technical Center, Bremerton (\$42M)

Healthcare & Mental Health

Policy Items:

- **Passed. HB 1531:** Preserving the ability of public officials to address communicable diseases.
- **Passed. HB 1971:** Increasing access to prescription hormone therapy.
- **Passed. SB 5577:** Concerning Medicaid coverage for HIV antiviral drugs.
- **Passed. HB 1432:** Improving access to appropriate mental health and substance use disorder services.

Healthcare & Mental Health

Policy Items (continued):

- **Passed. SB 5480:** Protecting consumers by removing barriers created by medical debt.
- **Passed. HB 1392:** Creating the Medicaid access program.
- **Passed. SHB 1811:** An act relating to enhanced crisis response services through co-response integration and support.

Housing

Included in the Budget:

- St. Vincent de Paul Star of Hope Project Funding (\$1.5M)
- Peninsula Community Health Services (Oak, Spruce, Pine House)

Policy Items:

- **Passed. HB 1217:** Improving housing stability (rent stabilization).
- **Passed. HB 1491:** Promoting transit-oriented housing development.
- **Passed. SSHB 1696:** Modifying the covenant homeownership program.

What is next?

- Continued collaboration
- Plan additional activities for the interim
- Crafting and/or advancing policy positions and priorities for the 2026 Legislative Session

Introducing Jeneise Briggs, Diversity and Community Engagement Manager for the City of Bremerton

Holding space for conversations among uncertainty

- Has your work faced recent challenges due to federal and/or state budget cuts, programmatic changes, or recent Executive Orders?
- What are some of the biggest needs your community has right now?
- How can we partner with each other to navigate through this uncertainty with solidarity and support?

What we're doing to meet the
moment



Share out

Does anyone have updates for the group?

THANK YOU!

equity@kitsappublichealth.org



kitsappublichealth.org