



Health Equity Collaborative

September 17, 2024



Erica Whares
Equity Program
Coordinator

Maria Fergus
Community
Engagement Specialist

About the Health Equity Collaborative

OUR VISION

Everyone in Kitsap County can achieve their optimal health and safety, and no one is disadvantaged in achieving these outcomes because of systemic inequities or systems of oppression, including racism.

OUR MISSION

The Kitsap Health Equity Collaborative convenes to identify and implement shared solutions and collective actions, promote pro-equity policies, and amplify the voices of communities most affected by systemic inequities, including racism.



Collaborative Agreements

Respect:

We will use respectful and inclusive language to honor different lived experiences and perspectives, recognize individual biases and systems/structures of oppression, assume good intent, and distinguish that intent doesn't negate impact, and keep sensitive information shared at meetings confidential.

Inclusion and Open-mindedness:

We will honor the contributions of all members and seek and value every person's input by ensuring everyone has a chance to comment and by being open to different and opposing perspectives and opinions.

Consensus:

We understand consensus is desired as the decision-making process and that differing opinions are part of the process, and while majority vote will determine next steps, the opinions of those in the minority will be honored by members with respect, inclusion, and open-mindedness.

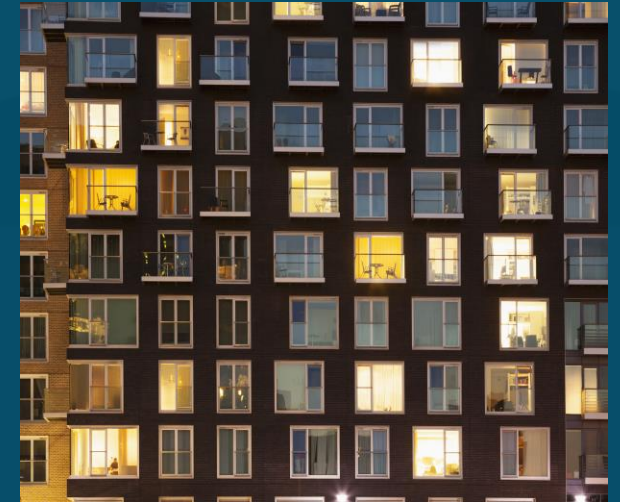
From our Jan. 2023 brainstorm: Our three priority areas



**Accessible Medical
Care**



**Accessible Mental
Health Services**



**Affordable
Housing**

How does this group get to action?

- Today: scope; Next meeting: Specifics
- By the end of our meeting today, the goal is to:
 - Co-create a structure that's going to be the most advantageous for the HEC to get to action
 - Identify how we want to work together
 - Please consider our three priority areas in your planning

Building your HEC Utopia

OUR VISION

Everyone in Kitsap County can achieve their optimal health and safety, and no one is disadvantaged in achieving these outcomes because of systemic inequities or systems of oppression, including racism.

OUR MISSION

The Kitsap Health Equity Collaborative convenes to identify and implement shared solutions and collective actions, promote pro-equity policies, and amplify the voices of communities most affected by systemic inequities, including racism.

OUR TOPIC AREAS

Healthcare Access; Mental Health and Substance Use Disorders; Housing

Considerations:

1. Do we want to stay in one large group or break into work groups? If you'd prefer to break into groups, how many groups, and what is the goal for each? How often would each workgroup meet?
2. How will we define success?
3. How do we best want to come together to reach action?
4. What are some strengths and weaknesses of your group's plan?

TIMING FOR BRAINSTORM

1. 40 minutes to brainstorm at your table (10 minutes self-reflection, 30 min for sharing in small group + planning for share-out)
2. 20 minutes for share-out in the large group
3. 20 minutes for voting + feedback in the large group

Options for Workgroups

Option for workgroups (check one):

- ☐ Large group only
☐ Large group + Workgroup(s)
☐ Workgroup(s) only

If you are interested in workgroups, what does that look like to you? (e.g. how many workgroups? How often will each meet? Who would be involved in each? How would we share information across workgroups?)

Let's brainstorm as a group how this might look

Considerations:

1. Do we want to stay in one large group or break into work groups?
*If you'd prefer to break into groups, how many groups, how often each would meet, and what is the goal for each?
2. How will we define success?
3. How do we best want to come together to reach action?
4. What are some strengths and weaknesses of your group's plan?

Examples of how this could look

Work group model:



- **Coalition Of Resources:** group for networking and program updates
- **Community Advisory Board:** group to inform KPHD or other organizational activities (consultation)
- **Civic Action Network:** group to lead action in areas that are not being immediately picked up by other processes

Consultation model:



- KPHD offers actions based on what we have the capacity and approval to do/impact
- The HEC chooses from that list of options

Current model:

- One large group: getting to consensus for a large group can be difficult and will take more time



Something else entirely

- How do you think the HEC will be most able to get to action?

In groups of 6-10 people...

- Introductions
- Collaboratively brainstorm what your vision is for the future of the HEC, using the 'Building your HEC Utopia' worksheet and Considerations questions
 - You do not need to answer the questions verbatim, but you can if it's helpful.
- Be prepared to share out with the large group at the conclusion of the 40 minutes



Share out



Voting

- Each person gets one vote
- To vote: Place a sticker on the poster that MOST resonates with you
 - If you have pressing questions, additions, or edits to any of the plans, please write them on an index card and place it in the corresponding envelope.

THANK YOU!

Next meeting: November 19th



kitsappublichealth.org

Data Workgroup Meeting next Thursday, September 26th!

Please join us for a special session to discuss equitable public health data with the KPHD Epidemiology and Assessment program.

Our goal is to improve the extent to which Kitsap's diverse communities and identities are reflected in local public health data. This session will focus on the reporting and interpretation of data grouped by race and ethnicity categories. We will also present an "Epi 101" session that will cover analytical concepts to inform our discussion like: individual versus population data, statistical significance, and suppressing small numbers.

The first half of the session will be a presentation, and the second half will be a group discussion and voting on proposed updates to analysis and display of data by KPHD.

For those unable to join, there will be an online comment form to share written feedback. We will send the presentation slides shortly before the session.