

Kitsap Health Equity Collaborative

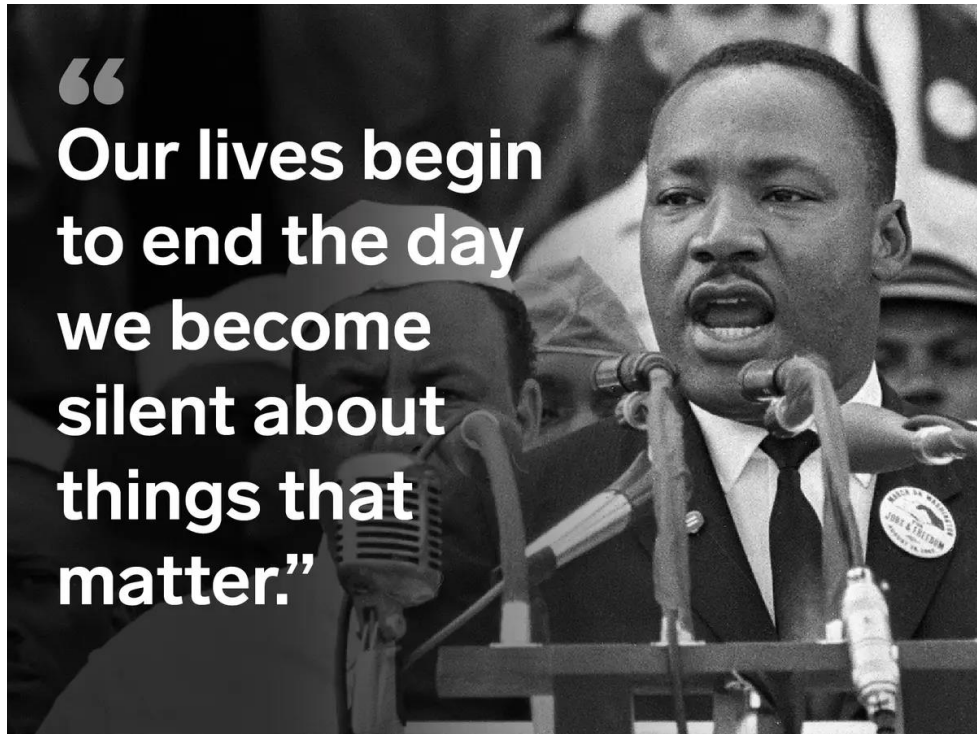
January 21, 2025



Erica Whares
Equity Program Coordinator



Welcome



Reverend Dr. Martin Luther King, Jr. dedicated his life to fighting for equality, social justice, and speaking out against racial discrimination. The day after MLK Day is dedicated as the National Day of Racial Healing.

- Welcome
- HEC Handbook Feedback
- Break
- Workgroup launches
- Share-outs
- Closure

Health Equity Collaborative

An aerial photograph of a coastal town, likely in Kitsap County, Washington. The town is built on a peninsula or near a large body of water. In the foreground, there is a large marina filled with many white sailboats and yachts. The town itself is densely packed with various buildings, including residential houses and larger commercial or institutional structures. In the background, a range of mountains with snow-capped peaks stretches across the horizon under a blue sky with scattered white clouds.

OUR VISION

Everyone in Kitsap County can achieve their optimal health and safety, and no one is disadvantaged in achieving these outcomes because of systemic inequities or systems of oppression, including racism.

OUR MISSION

The Kitsap Health Equity Collaborative convenes to identify and implement shared solutions and collective actions, promote pro-equity policies, and amplify the voices of communities most affected by systemic inequities, including racism.

Collaborative Agreements

Respect:

We will use respectful and inclusive language to honor different lived experiences and perspectives, recognize individual biases and systems/structures of oppression, assume good intent, and distinguish that intent doesn't negate impact, and keep sensitive information shared at meetings confidential.

Inclusion and Open-mindedness:

We will honor the contributions of all members and seek and value every person's input by ensuring everyone has a chance to comment and by being open to different and opposing perspectives and opinions.

Consensus:

We understand consensus is desired as the decision-making process and that differing opinions are part of the process, and while majority vote will determine next steps, the opinions of those in the minority will be honored by members with respect, inclusion, and open-mindedness.

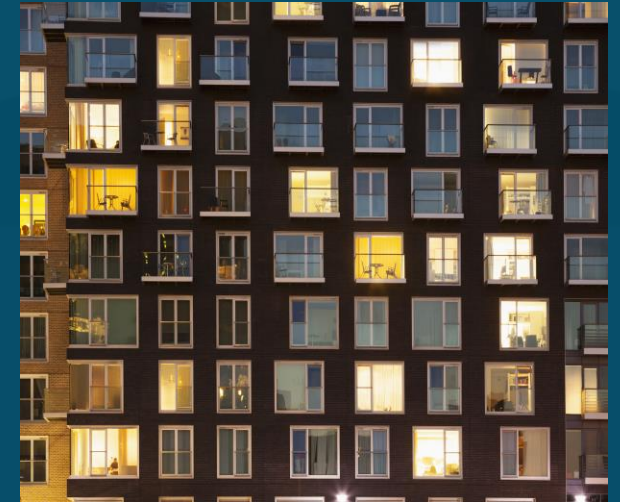
From our Jan. 2023 brainstorm: Our three priority areas



**Accessible Medical
Care**



**Accessible Mental
Health Services**



**Affordable
Housing**

Due to shipping delays, our 2025 HEC gift cards have not yet arrived. They should be here sometime later this week.

If you are eligible for compensation for today's meeting, please see us during the break or at the end of the meeting so we can coordinate getting your gift cards to you.

If you're joining virtually, please put in the chat (or direct message) if you are attending today's meeting on unpaid time. You can also email equity@kitsappublichealth.org.

Update

Siri Kushner and Jessica Guidry

- New leadership and processes within KPHD
- Reflections
- New state, national guidance on community engagement
- Changes in political/social landscape

Continuous Quality Improvement Cycle



Key Priorities/Themes

- Accountability & Transparency
- Sustainability & Financial Stewardship
- Impact
- Strategy
- Cocreation & Mutual Benefit

HEC Handbook

Why a handbook?

- Provides clearly outlined procedures and expectations for the HEC
- Facilitates onboarding for new members
- Helps us solve problems and build community together
- Important note: this is a living document and can be updated as needed
 - The KPHD Equity team will plan to review the HEC Handbook annually and share any changes

What is the same?

- Vision & Mission Statement
- Collaborative Agreement
- Member Eligibility
- Member Benefits
- Meeting Frequency, Dates

What is new?

- New Member Process
- Organizational Representatives
- Attendance Expectations
- Roles & Responsibilities
- Compensation / Gift Cards
- Guests

- What do like about the handbook?
- Should anything be changed?
- What happens next?
 - We'll take your feedback and edits into consideration, then bring the HEC handbook back to the group for adoption next meeting.

Break



Workgroup Launches

February kick-off for 3 workgroups (temporary pause on data workgroup)

First meeting

- Discussion about co-facilitation and meeting logistics
- Scoping – how do we create goals/objectives/outcomes that are specific and measurable, related to the committee's topic
- Who is missing from this group that should be included?
- Idea for second meeting: Asset mapping

Plan for 2025

Workgroups

- **FEB –**
 - Accessible Medical Care workgroup
 - Accessible Mental Health Services workgroup
 - Affordable Housing workgroup
- **APRIL –**
 - Accessible Medical Care workgroup
 - Accessible Mental Health Services workgroup
 - Affordable Housing workgroup
- **JUNE–**
 - Accessible Medical Care workgroup
 - Accessible Mental Health Services workgroup
 - Affordable Housing workgroup



Share out

Does anyone have updates for the group?

THANK YOU!

equity@kitsappublichealth.org



kitsappublichealth.org